

Atlantis Rising

Featuring Zuma by Tula Pink

Somewhere over the rainbow...an abundance of color delight easily created with a design roll.

| | |
|-----------------------|---------------------------------|
| Collection: | Zuma by Tula Pink |
| Technique: | Piecing |
| Skill Level: | Beginner |
| Crafting Time: | Weekend* |
| Finished Size: | 78" x 82" (198.12cm x 208.28cm) |

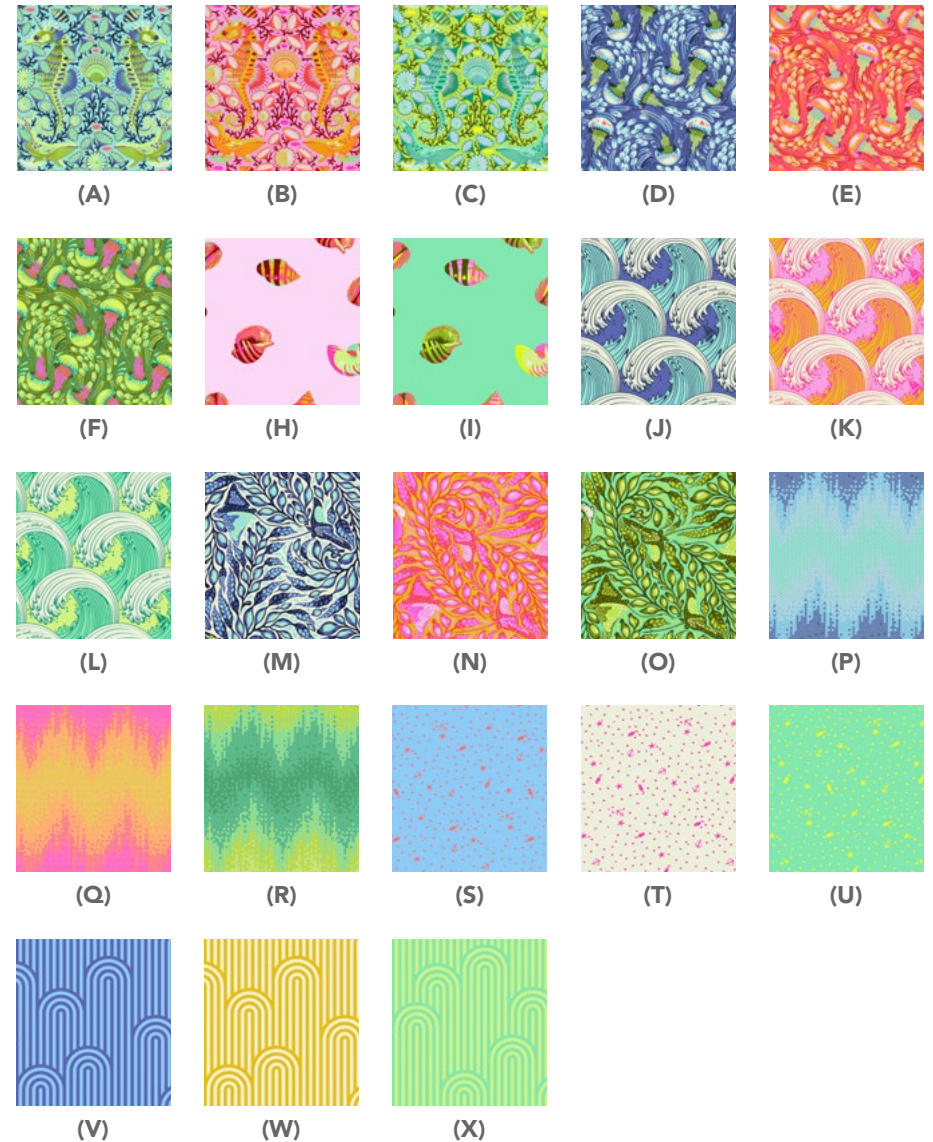
*Crafting time based on Beginner skill level

Project designed by Stacey Day

Tech edited by Linda Turner Griepentrog and Kerri Thomson

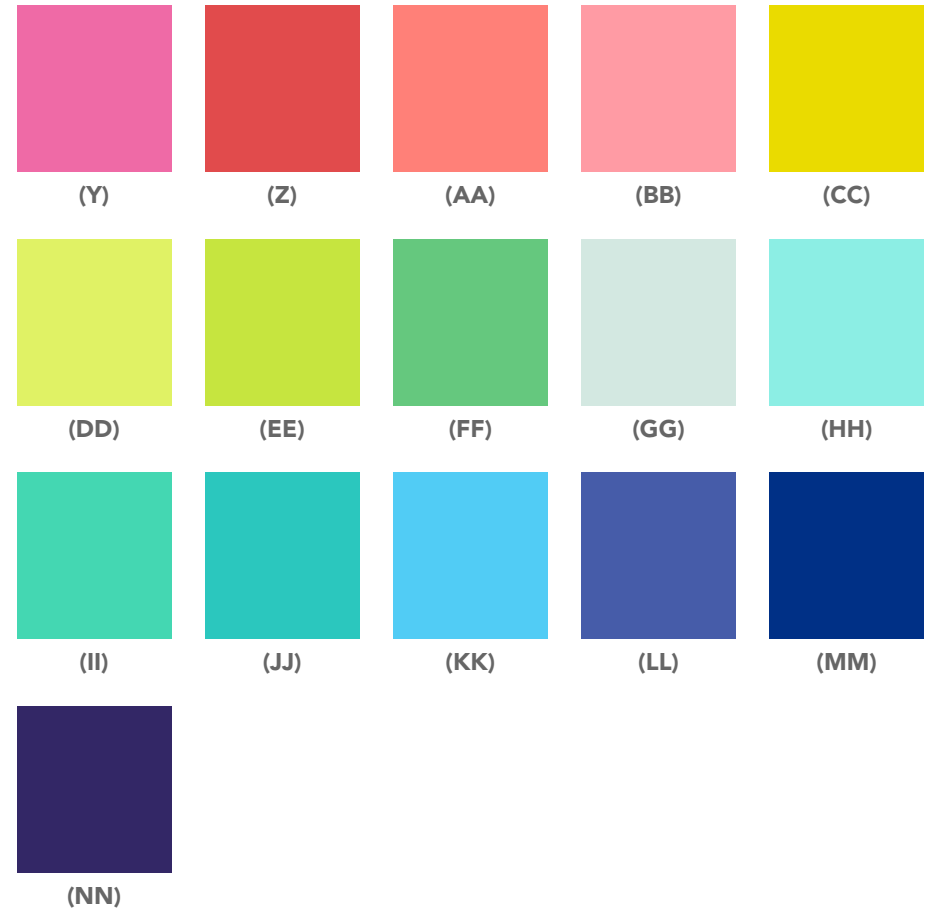
Fabric Requirements

| DESIGN | COLOR | ARTICLE CODE | YARDAGE |
|--------|----------------|--------------|------------------------------|
| (A) | Sea Stallion | Aqua Marine | PWTP119.AQUAM 1 - 2½" strip |
| (B) | Sea Stallion | Glow Fish | PWTP119.GLOWF 1 - 2½" strip |
| (C) | Sea Stallion | Sea Glass | PWTP119.SEAGL 1 - 2½" strip |
| (D) | Sea Bloom | Aqua Marine | PWTP120.AQUAM 1 - 2½" strip |
| (E) | Sea Bloom | Glow Fish | PWTP120.GLOWF 1 - 2½" strip |
| (F) | Sea Bloom | Sea Glass | PWTP120.SEAGL 1 - 2½" strip |
| (H) | Sea Shells | Glow Fish | PWTP121.GLOWF 2 - 2½" strip |
| (I) | Sea Shells | Sea Glass | PWTP121.SEAGLA 2 - 2½" strip |
| (J) | White Caps | Aqua Marine | PWTP122.AQUAM 2 - 2½" strip |
| (K) | White Caps | Glow Fish | PWTP122.GLOWF 2 - 2½" strip |
| (L) | White Caps | Sea Glass | PWTP122.SEAGL 2 - 2½" strip |
| (M) | Stingray | Aqua Marine | PWTP123.AQUAM 2 - 2½" strip |
| (N) | Stingray | Glow Fish | PWTP123.GLOWF 2 - 2½" strip |
| (O) | Stingray | Sea Glass | PWTP123.SEAGL 2 - 2½" strip |
| (P) | High Tide | Aqua Marine | PWTP124.AQUAM 2 - 2½" strip |
| (Q) | High Tide | Glow Fish | PWTP124.GLOWF 2 - 2½" strip |
| (R) | High Tide | Sea Glass | PWTP124.SEAGL 2 - 2½" strip |
| (S) | Glitter Litter | Aqua Marine | PWTP125.AQUAM 2 - 2½" strip |
| (T) | Glitter Litter | Glow Fish | PWTP125.GLOWF 1 - 2½" strip |
| (U) | Glitter Litter | Sea Glass | PWTP125.SEAGL 2 - 2½" strip |
| (V) | Tower 7 | Aqua Marine | PWTP126.AQUAM 2 - 2½" strip |
| (W) | Tower 7 | Glow Fish | PWTP126.GLOWF 2 - 2½" strip |
| (X) | Tower 7 | Sea Glass | PWTP126.SEAGL 2 - 2½" strip |



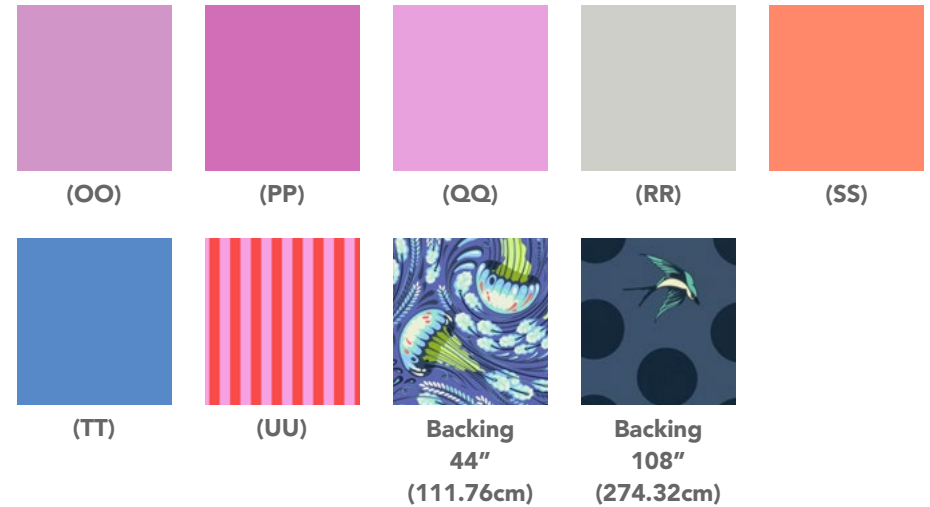
Fabric Requirements (continued...)

| DESIGN | COLOR | ARTICLE CODE | YARDAGE |
|---------------------------------|-----------|---------------|---------------|
| (Y) Designer Essentials Solids | Tula | CSFSESS.TULAX | 2 - 2½" strip |
| (Z) Designer Essentials Solids | Cajun | CSFSESS.CAJUN | 2 - 2½" strip |
| (AA) Designer Essentials Solids | Hibiscus | CSFSESS.HIBIS | 2 - 2½" strip |
| (BB) Designer Essentials Solids | Taffy | CSFSESS.TAFFY | 2 - 2½" strip |
| (CC) Designer Essentials Solids | Pear | CSFSESS.PEARX | 2 - 2½" strip |
| (DD) Designer Essentials Solids | Mojito | CSFSESS.MOJIT | 1 - 2½" strip |
| (EE) Designer Essentials Solids | Limeade | CSFSESS.LIMEA | 2 - 2½" strip |
| (FF) Designer Essentials Solids | Cricket | CSFSESS.CRICK | 2 - 2½" strip |
| (GG) Designer Essentials Solids | Glacier | CSFSESS.GLACI | 2 - 2½" strip |
| (HH) Designer Essentials Solids | SeaBreeze | CSFSESS.SEABR | 1 - 2½" strip |
| (II) Designer Essentials Solids | Julep | CSFSESS.JULEP | 2 - 2½" strip |
| (JJ) Designer Essentials Solids | Aegean | CSFSESS.AEGEA | 2 - 2½" strip |
| (KK) Designer Essentials Solids | Cerulean | CSFSESS.CERUL | 2 - 2½" strip |
| (LL) Designer Essentials Solids | Iris | CSFSESS.IRISX | 2 - 2½" strip |
| (MM) Designer Essentials Solids | Sapphire | CSFSESS.SAPPH | 2 - 2½" strip |
| (NN) Designer Essentials Solids | Diva | CSFSESS.DIVAX | 1 - 2½" strip |



Fabric Requirements (continued...)

| DESIGN | COLOR | ARTICLE CODE | YARDAGE |
|---------------------------------|------------|---------------|------------------|
| (OO) Designer Essentials Solids | Freesia | CSFSESS.FREES | 2 - 2½" strip |
| (PP) Designer Essentials Solids | Cosmo | CSFSESS.COSMO | 2 - 2½" strip |
| (QQ) Designer Essentials Solids | Sweet Pea | CSFSESS.SWEET | 2 - 2½" strip |
| (RR) Designer Essentials Solids | Putty | CSFSESS.PUTTY | 2 - 2½" strip |
| (SS) Designer Essentials Solids | Persimmon | CSFSESS.PERSI | 1 - 2½" strip |
| (TT) Designer Essentials Solids | Cornflower | CSFSESS.CORNF | 1 - 2½" strip |
| (UU) Tent Stripe | Poppy | PWTP069.POPPY | ¾ yard (68.58cm) |



Backing (Purchased Separately)

44" (111.76cm) wide

| | | | |
|-----------|------------|---------------|------------------|
| Sea Bloom | Aquamarine | PWTP120.AQUAM | 7¼ yards (6.63m) |
|-----------|------------|---------------|------------------|

OR

108" (274.32cm) wide

| | | | |
|-----------|------|---------------|------------------|
| Free Fall | Navy | QBTP001.2NAVY | 2½ yards (2.29m) |
|-----------|------|---------------|------------------|

Additional Requirements

- 100% cotton thread in colors to match
- 86" x 90" (218.44cm x 228.60cm) batting

Cutting

Fabric UU, cut:

Enough 2¼" (5.72cm) bias strips to make 330" (838.20cm) of finished binding

Tip: Use a fabric stiffening spray before cutting to help prevent the bias edges from stretching.

Sewing

All seam allowances are ¼" (.64cm) and pieces are sewn right sides together. Press seams in one direction.

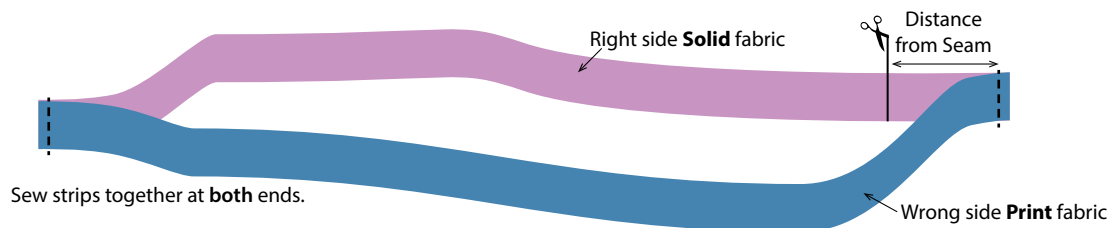
1. Cut each Design Roll strip to 41¾" (106.05cm) long.
2. Sew (1) **Fabric D** and (1) **Fabric RR** strip together on one end. Trim ¼" (.64cm) from each end of the pieced strip so it measures 2½" x 82½" (6.35cm x 209.55cm). Label as Row 1. Repeat with (1) **Fabric V** and (1) **Fabric RR** strip, label as Row 39.
3. Using the chart provided, sew (1) each of the remaining strips together at both ends to make a loop. Measure the given distance from a seam and cut the SOLID FABRIC ONLY ONCE at that measurement. (**Fig. 1**) Label with the row number as shown. Rows will measure 2½" x 82½" (6.35cm x 209.55cm).

| Row Number | Print/Solid Fabric | Distance from Seam |
|------------|--------------------|--------------------|
| 2 | V/OO | 2¼" (5.72cm) |
| 38 | S/OO | |
| 3 | S/QQ | 4¼" (10.80cm) |
| 37 | M/QQ | |
| 4 | M/PP | 6¼" (15.88cm) |
| 36 | J/PP | |
| 5 | J/Y | 8¼" (20.96cm) |
| 35 | P/Y | |
| 6 | P/Z | 10¼" (26.04cm) |
| 34 | A/Z | |
| 7 | U/AA | 12¼" (31.12cm) |
| 33 | | |
| 8 | O/BB | 14¼" (36.20cm) |
| 32 | O/SS | |
| 9 | C/CC | 16¼" (41.28cm) |
| 31 | F/BB | |
| 10 | R/DD | 18¼" (46.36cm) |
| 30 | R/CC | |

| | | |
|----|------|----------------|
| 11 | I/EE | 20¼" (51.44cm) |
| 29 | | |
| 12 | L/FF | 22¼" (56.52cm) |
| 28 | | |
| 13 | X/II | 24¼" (61.60cm) |
| 27 | | |
| 14 | W/JJ | 26¼" (66.68cm) |
| 26 | | |
| 15 | K/HH | 28¼" (71.76cm) |
| 25 | K/GG | |
| 16 | N/GG | 30¼" (76.84cm) |
| 24 | N/KK | |
| 17 | H/KK | 32¼" (81.92cm) |
| 23 | H/TT | |
| 18 | Q/LL | 34¼" (87cm) |
| 22 | | |
| 19 | B/MM | 36¼" (92.08cm) |
| 21 | E/MM | |
| 20 | T/NN | 38¼" (99.16cm) |

Note: There will be (1) strip from each design roll left over.

Fig. 1



Quilt Top Assembly

- Following the **Quilt Layout** diagram, sew the long edges of the rows together in numerical order to make the quilt top. Press the seams open.

Finishing

- Sew together the 2¼" x WOF (5.72cm x WOF) **Fabric UU** binding strips end to end using diagonal seams. Press the seams open. Press the binding strip in half wrong sides together.
- Layer the backing (wrong side up), batting, and quilt top (right side up). Baste the layers together and quilt as desired. Trim excess batting and backing even with the top after quilting is completed.
- Leaving an 8" (20.32cm) tail of binding, sew binding to top of quilt through all layers matching all raw edges. Miter corners. Stop approximately 12" (30.48cm) from where you started. Lay both loose ends of binding flat along quilt edge. Where these two loose ends meet, fold them back on themselves and press to form a crease. Using this crease as your stitching line, sew the two open ends of the binding together right sides together. Trim seam to ¼" (.64cm) and press open. Finish sewing binding to quilt.
- Turn the binding to the back of quilt and hand-stitch in place.

Quilt Layout

